

REP-Report-IO®

ACTUATOR / OPENING SENSOR

USE CASES

DOOR OPENING

Thanks to its two-way real-time communication, the REP-Report-IO allows remote activation of electric strikes, ideal for opening an access door or a storage box.

In case of existing buildings, deployment of REP-Report-IO objects will allow control and supervision of all your accesses, without additional wiring.

Thanks to LoRa and Clover-Net technology, supervision and instantaneous remote control can be done up to more than 500m in buildings.

MOTOR ACTIVATION AND ACTUATORS

The REP-Report-IO has 2 independent power relays (230Vac / 5A) that enables, for example, the control-command of motors or actuators. The all-or-nothing inputs (dry contact) will detect the return of a position switch indicating the correct activation of the device, or other useful information.

Moreover, a weekly calendar (2 activation periods per day, over 7 days) will allow routine operations to be set up in advance.

SPECIFICITIES

OPERATING MODES

- Timed, delayed, NO or NC relay activation command
- Remote supervision of inputs and output status reporting.
- Seven-day calendar-based control (2 ranges per day)
- Local or remote status reporting (REP-Switch-BP compatible)
- Distribution of power supply (24Vdc or 230Vac) on the outputs or simple relay outputs (optional when ordering).

ADDITIONAL FUNCTIONS

- Tear-off and case opening detection
- KeepAlive and Technical Messages
- Quick start by magnet action



REPORT OF STATE

The REP-Report-IO can be used to mutual status.

The 2 REP-Report-IO are paired by configuration, the change of state in an input of one of them can activate the output relay of another REP-Report-IO.

This allows immediate remote status transfer and eliminates wiring need between an activation contact and the motor or actuator. Although this mode works in standalone mode, supervision by a LoRaWAN infrastructure is still possible.

This activation can also be done using an REP-Switch-BP, thus serving as a remote control for one of the REP-Report-IO relays.

IDENTIFICATION BY LED

A multicolored LED present on the casing allows easy determination of its status.

SCALABLE FEATURES

Thanks to its remote update capability (FOTA), INEO-SENSE offers the addition of new functional modes even more suited to your operational constraints, such as tailor-made relay control scenarios, or other.

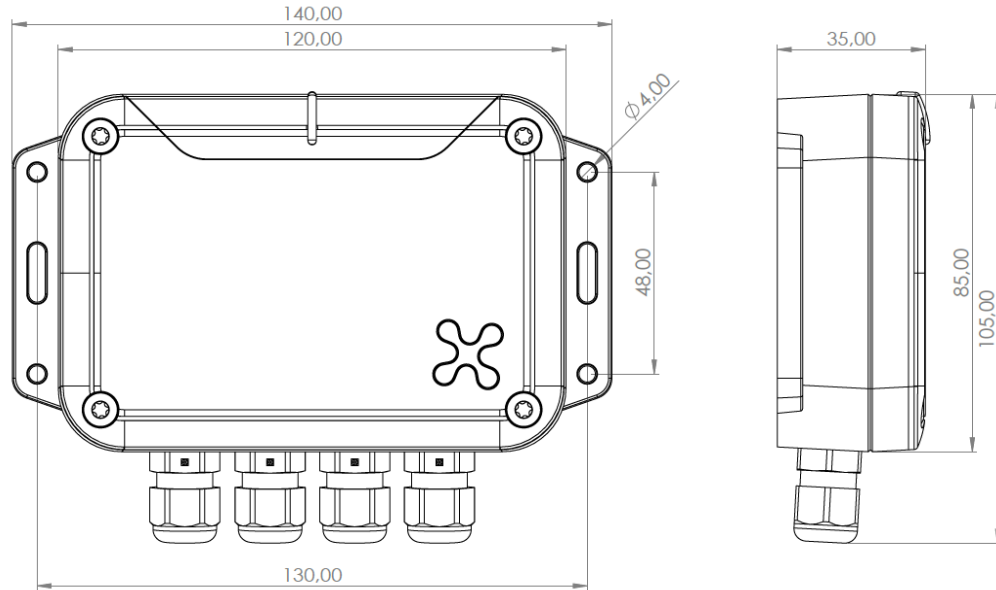
TIME-STAMPED DATALOGGING of events (+3000)

AVAILABLE OPTIONS

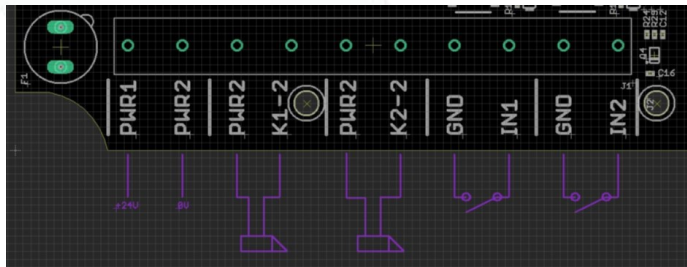
- Magnetic fasteners on the back of the case
- Version without ears
- Power supply 230VAC or 24VDC (on order)
- Customizable front panel (colors, logo) for series.

Specifications

Mechanicals



Wiring



Physical Characteristics

Power supply	Optional (separate references) on internal terminal block: -24Vdc -230Vac 50Hz
	- 2 relay outputs with or without power redistribution (separate references), -2 dry contact inputs
Weight	180 g
ABS case	125 x 55 x 40mm
IP rating	IP54 or IP66
Functioning Temperature	-10°C to 50°C
Storage Temperature	-40°C to 80°C
Humidity	< 95% without condensation

Fixations

Glue

Magnet (optional supply)

Screws

Communication

LoRaWAN	Class A
	EU868, 915US, AU915, AS923
	Private Mode and Public Mode
	OTA and ABP
	Transmit power 14dBm (EU) 20dBm max
CloverNet	

Product References

With different possible options

REP-LNΣ-X89-ΩΦ0	Σ = Cases Version	{ E = WITHOUT flange O = With flange	Ω = IP rating { 5 = IP55 6 = IP66	Φ = Power supply { C = 24 V _{DC} M = 220 V _{AC}
REP-LNΣ-X89-ΩΦ0				

Example of product References

REP-LNE-X89-5C0	REP-Report-IO - Without flange case - IP54 - 24 V _{DC}
REP-LNO-X89-6M0	REP-Report-IO - With flange case - IP66 - 220 V _{AC}

INEO-SENSE

125 Rue de L'hostellerie,
Immeuble ELLIPSIS, Niv 4 Porte 12
30 900 Nîmes — France

Phone : +33 466 276 495
Web : www.ineo-sense.com
contact@ineo-sense.com

© 2024 Ineo-Sense. All rights reserved. Clover-Net, Clover-Sense, REP-Report & ACS-Switch, are trademarks of Ineo-Sense company. All other brands mentioned are the property of their respective holders. This is non-contractual document, and may be modified without notice.
Rev. 06.02.2024